

National Health Accounts Production Tool

The National Health Accounts (NHA) framework is an internationally standardized methodology for measuring financial resource flows in the health sector. NHA is designed to provide health expenditure information to policy makers and stakeholders in ways that can be clearly and directly linked to a country's health financing concerns and health system performance; therefore, it has been accepted as a critical policy tool in many countries. However, the complexity of the NHA methodology has been an important deterrent to routine, consistent, and low-cost production of NHA estimates. Many low-income countries have come to rely heavily on foreign technical assistance to implement NHAs. Documentation of the methods remains poor and estimation techniques vary from year to year, compromising the comparability of NHA results over time. Together, these challenges have prevented countries from successfully institutionalizing NHA (i.e. routinely producing and using high quality NHA data). The NHA Production Tool lessens the complexity of the NHA exercise by providing step-by-step guidance to in-country NHA teams, thereby reducing the need for technical assistance and increasing local capacity for NHA production.

WHAT IS THE NHA PRODUCTION TOOL?

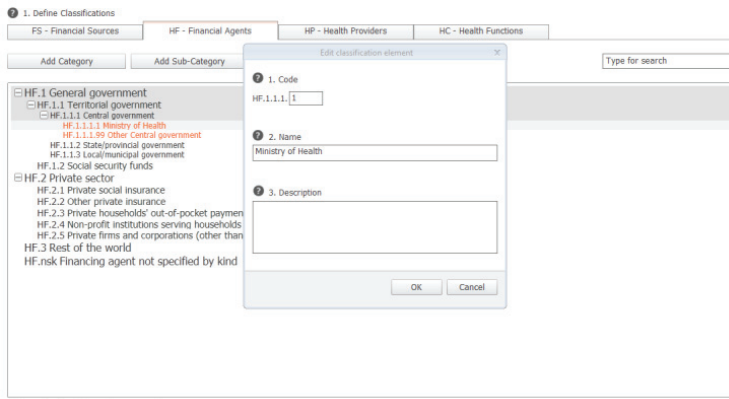
The NHA Production Tool is software developed by Health Systems 20/20, a USAID-funded health systems strengthening project, with input and support from NHA country teams and key stakeholders like World Health Organization and World Bank. Key features of the tool include:

- Step-by-step directions to help guide country teams through the NHA methodology. This will greatly simplify the process and allow non-NHA experts to complete an estimation with reduced external assistance
- A platform to manage complex datasets and reduce the burden of data management
- A survey creator and importer to streamline the data collection with the data analysis process
- A built-in auditing function to facilitate review and correction for possible double-counting
- A report generator for simplified NHA table creation
- An interactive diagram feature to help NHA teams visualize and critically analyze the flow of funding through the health sector.

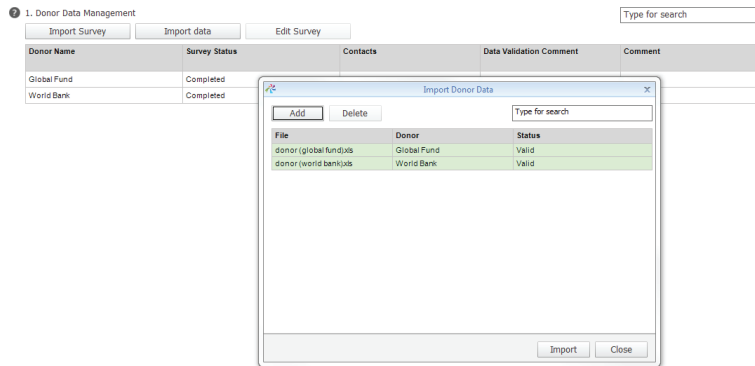


EXAMPLES FROM THE NHA PRODUCTION TOOL

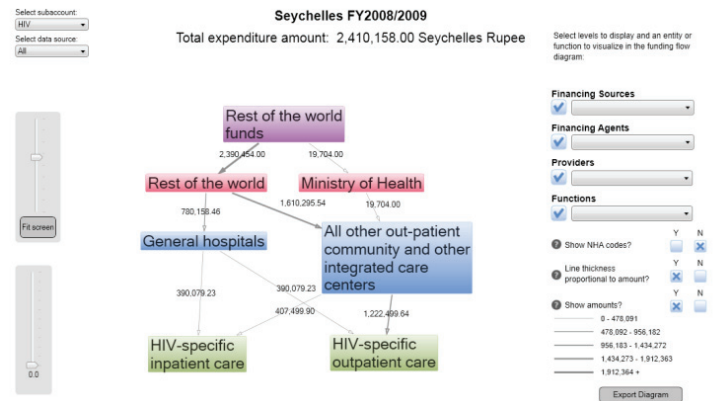
The Production Tool provides core classifications as provided by the System of Health Accounts (SHA). Additionally, local teams can create country-specific codes to be used in their NHA.



The data import feature allows for easy storage of data within the tool. Validated data will be automatically sent to the mapping section of the tool where local teams are prompted to assign NHA codes for each expenditure.



The interactive diagram section allows for teams to visualize and critically analyze the flow of funding between entities. This visualization exercise also provides an easily understandable medium for explaining expenditure flows in a way that is more accessible to persons unfamiliar with NHA terminology.



NEXT STEPS

The English language version of the NHA Production Tool is functional and ready for use by country NHA teams, including a built-in user guide and screen-by-screen tutorials, and is expected to be available for download from the World Health Organization website in the second half of 2012. French and Spanish language versions of the application are expected to be available in June 2012.

For further information, please email Douglas Glandon, NHA Coordinator for the Health Systems 20/20 project. (douglas_glandon@abtassoc.com)

Health Systems 20/20 is a five-year (2006-2011) cooperative agreement (No. GHS-A-00-06-00010-00) funded by the U.S. Agency for International Development (USAID). The project uses an integrated approach to address the financing, governance, operational, and capacity constraints in a health system that impede access to and use of life-saving priority health services.

Abt Associates Inc. leads a team of partners that includes: | Aga Khan Foundation | Bitrán y Asociados | BRAC University | Broad Branch Associates | Deloitte Consulting, LLC. | Forum One Communications | RTI International | Training Resources Group | Tulane University School of Public Health

This publication was produced for review by USAID. It was prepared for the Health Systems 20/20 project by Douglas Glandon.

May 2012

DISCLAIMER: The author's views expressed here do not necessarily reflect the views of the United States Agency for International Development or the U.S. Government.



For more information about Health Systems 20/20 please contact: Health Systems 20/20 | Abt Associates Inc. | www.abtassociates.com | 4550 Montgomery Lane | Suite 800 North | Bethesda, MD 20814 | USA | E-mail: info@healthsystems2020.org | www.healthsystems2020.org